

Operations – January 2018 Update

THIS NOTICE IS PART OF SYDNEY MARKETS' REGULAR UPDATES TO TENANTS

WINE GRAPE SEASON

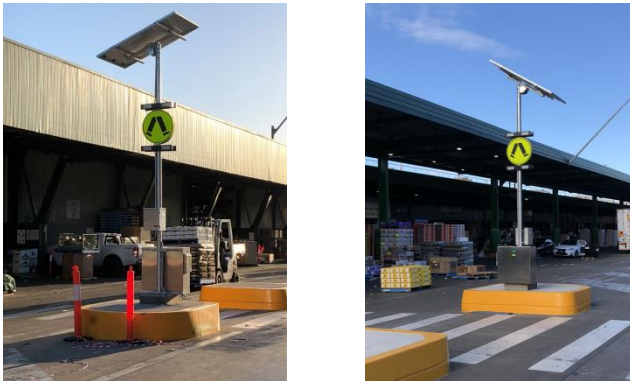
The 2018 Wine Grape trading season will commence Friday 9th March 2018 in the Sydney Markets Rail area. The Wine Grape Season lasts for 10 weeks, finishing on 12th May 2018.



KEEP OUR MARKETS CLEAN

*** DO NOT USE BLOWERS TO CLEAN UP YOUR STANDS! ***
Remember blowers create too much dust for everyone and affects display stock.

PEDESTRIAN SAFETY WARNING LIGHTS



To further improve safety within the Markets site, SML has begun the roll out of new signage as part of our overall Traffic Management Plan.

Pedestrian warning lights have been installed on Centre Road and South Road at the pedestrian crossings.

ENVIRONMENT UPDATE

We are experiencing a very hot summer this year and with favourable growing conditions fruit and vegetables are in abundance. Our waste volumes have increased significantly this year and reached a high diversion rate of 69% Recycling for December 2017!

Cardboard collection and recycling has improved due to new initiatives implemented by Veolia Environmental Services. Clean cardboard can be left at the end of the Dock way for Wholesalers/Warehouses or taken directly to Green Point. Paddy's stand holders can leave the cardboard on their stand at the end of trading and it will be collected by our waste Contractor.



Please ensure all fruit and vegetable waste is separated and taken to Green Point for recycling. Remember to remove the packaging from the fruit and vegetable waste and place it inside cardboard bins (similar to watermelon bins) it reduces contamination and helps our recycling process. Remember to keep food waste bins clean from packaging or you may be charged additional costs for disposal. There has also been a significant increase of plain pallets around the site, so please don't discard them, take them directly to Green Point for re-use or recycling.

BLUE STAR SUSTAINABILITY AWARD

SML was recognised once again by receiving a Sustainability Certificate at the recent Blue Star Awards organised by Keep NSW Beautiful.



- The 2017 Blue Star Metropolitan Sustainability Awards recognise, celebrate and reward the sustainability initiatives of NSW metropolitan councils, businesses and community groups.
- The Blue Star Awards recognise a range of projects across a broad range of sustainability areas, and in particular community engagement and education, that all help to Keep NSW Beautiful.
- Being truly 'sustainable' means addressing the entire spectrum of environmental, social and economic factors.

 DO'S	 DONT'S
Sweep up and place litter in bin	Don't use Blower's to clean up the floor!
Deliver Fruit and Vegetable waste to Green Point	Don't dump fruit and vegetables inside Sulo Bins
Re-use plain pallets	Don't leave plain pallets around the site

If you require a red lid General Waste bin or green lid Organic Waste bin contact the Environment Manager Mr Con Kapellos on 0417 325 173.

Remember – Do the right thing! Help keep our Market clean and safe!

GREEN POINT OPERATION HOURS:

<i>Wholesale & Growers</i>	<i>Mon to Fri</i>	<i>8.30am – 2.30pm</i>
<i>Sydney's Paddy's Markets (between Buildings A & B)</i>	<i>Fri and Sun</i>	<i>3.00pm – 6.00pm</i>
<i>Sydney's Paddy's Market (outside Building D – Door 4)</i>	<i>Sat ONLY</i>	<i>3.00pm – 6.00pm</i>

For further information on how you could make a difference contact the Environment Manager, Mr Con Kapellos on 0417 325 173.



"Dob in a Dumper" if you see anyone dumping rubbish around the site call us immediately on 0409 325232



- If you would like to donate any suitable food waste for charity you can drop it off in the Rail Area beside the Weighbridge, Flemington Tuesdays and Fridays from 8:30am

- Since July 2017, Foodbank have collected 972 tonnes of fruit and vegetables at Flemington! Many thanks to all the Tenants who have donated.

SCAVENGERS IN THE WORK PLACE

For the safety of all concerned it is imperative that no person enters the site to scavenge for food through the bins or product left on the ground in any part of the Market. If you see anyone picking through left over product from the ground or in rubbish bins please report to Market Staff who will remove the person/s from site.

FIRE PREVENTION SAFETY TIPS

Sydney Markets Limited is committed to ensuring that all areas of our Markets are clean and well maintained.

Responsibility rests with all Market Tenants to maintain the cleanliness of their immediate tenancy area in accordance with the Occupancy Agreement and Market Rules.

Tenants are advised to keep their areas tidy and free of clutter and litter that could be a potential fire hazard.

Always remember:

- Sweep up litter inside your premise daily and place inside your bins, not outside your premises.
- Be fire conscious!
- Keep fire exits clear at all times.
- Report hazards immediately
- No smoking inside any building

These simple tips will provide our customers and tenants with a cleaner and safer Market environment.

ILLEGAL DUMPING ONSITE

Sydney Markets continues to work closely with Strathfield Council and the newly formed Government Regional Illegal Dumping Squad to combat illegal dumping of waste on site.



Information of person found dumping rubbish onsite will be passed onto Strathfield Council with fines starting from 2,000 for dumping waste can be issued. *If you see anyone dumping rubbish on site please do not hesitate to contact us to investigate the matter on 0409 325 232.*

PROPERTY UPDATE

Sydney Markets Plaza Offices Suites FOR LEASE

Office Suite B31 – 36m² (Approximately)

Positioned on the level 1, with light filled corner office.

Available Now.

Existing retail tenants in the Plaza are CBA, Westpac, ANZ, BOQ, Australia Post, Newsagency, Subway, Tigers Leagues Club, Pet Store, Chiropractor, Bakery, Café, Mobile Phone Retailer, Hairdresser and Butcher, along with commercial tenants such as Accountants, Dentist, & other professional services, plus a Hotel and Veterinary Hospital.

For all property enquires Shawn Freeburn can be contacted on 9325 6240.

SYDNEY MARKETS CONFERENCE CENTRE

The Sydney Markets Conference Centre is also available for hire. The Centre can be used as one unit or divided into two. **For details and bookings please contact the Executive Secretary on (02) 9325 6298.**



NO SMOKING

All Plaza tenants are reminded that **Shops and Office** suites are **SMOKE FREE ZONES**. Occupiers of any Market space are required

under the **Smoke Free Environment Act** to see that persons do not smoke in their premises.



WORK HEALTH & SAFETY WEBPAGE

SML has introduced a dedicated Work Health and Safety (WHS) Webpage for all stakeholders on the Sydney Markets website. The webpage contains the Sydney Markets Work Health and Safety Management Plan and details of Safety Notices, Bi-Monthly Operations updates and Site Services Notices. <http://www.sydneymarkets.com.au/>

Your feedback is important; if you have any queries with regards to the newly launched webpage, please contact the WHS Manager, John Pascucci on 0417 325 171

MARKET ENTRY PASSES
In accordance with the Sydney Markets Conditions of Entry all vehicles must display one of the following valid passes whilst in the Markets during operating hours:
DAILY ENTRY PASS
STANDARD ENTRY PASS
PREMIUM ENTRY PASS
Failure to display a valid pass may result in a Comply Notice being issued under the Sydney Markets Rules and the Conditions of Entry to Sydney Markets.

SAFE FORKLIFT OPERATIONS

- It is compulsory to wear a seat belt. Comply Notices will be issued for non-compliance. Forklifts without seatbelts cannot be used until a seatbelt is fitted.
- Directional signage and other road signage **MUST** be followed.
- Speed limits are enforceable (10kph under canopies, 20kph in open areas, 5kph on the forklift bridge).
- Forklifts should be governed to no more than 20kph. Forklift governors are randomly checked by SML staff to ensure they have not been tampered with.
- Pedestrian safety – be aware of pedestrian crossings and access ways.
- Forklift drivers must have a current RMS driver Licences and HRW (High Risk Work) Licence from WorkCover/SafeWork. These must be carried on drivers at all times.
- When operating a forklift on site you are not permitted to carry more than 15 empty pallets or to push empty pallets or pallets of produce along the ground.
- Defective forklifts are to be reported to the business owner (principal).
- Forklift operators are not permitted to carry passengers on forklifts.
- Travel in a forward direction when not carrying a load. Only travel in reverse whilst carrying a load that would obstruct your vision if travelling forward.
- Forklift lights must be turned on when operating at night.
- No mobile phones or two way radio devices to be used while operating forklifts.
- Do not operate any vehicle when under the influence of drugs (which may include some prescription drugs) or alcohol.
- No vehicles are allowed inside the buyers walks or the end ramp ways of Buildings A, B and C from:
3.00am to 8:00am Monday and Friday
3.30am to 8.00am Tuesday to Thursday.
- RMS Road Rules must be adhered to at all times and as such, the roundabout at Austin Avenue is to be used as per RMS Road Rules
- No person is to travel or be lifted on the tines of a forklift.
- Do not carry items on the forklifts other than what the forklift is designed to carry on pallets.
- Forklift drivers must not smoke, eat, drink, or use listening devices (e.g. iPods, mobile phones) whilst operating a forklift.
- Do not leave forklifts unattended whilst the forklift is still running.
- Do not leave the keys in the ignition of the forklift whilst the forklift is unattended.
- No pushing or pulling of other vehicles (including deliberately colliding with other forklifts), whilst operating a forklift.
- No 'hooning' or overtaking whilst operating a forklift.

SLOW DOWN • BUCKLE UP • STAY SAFE

For further information and enquiries please contact SML's Operations Manager, Adrian LaCava on 02 9325 6170.

Hotline number 0409 325 232
If you observe any reportable offence such as dumping, suspicious behaviour, transhipping, safety concerns or anything you believe to be reportable, please do not hesitate to contact the hotline number
Hotline number 0409 325 232

Brian Bigelow
Head of Operations

PERSONAL PROTECTIVE EQUIPMENT (PPE)

All people attending the Wholesale Produce, Growers and Flower Markets from Monday to Friday must wear high-visibility vests and appropriate footwear.

Vests can be purchased from vending machines onsite. Speak to a Market or Security Officer for directions to vending machine locations.

SYDNEY MARKETS